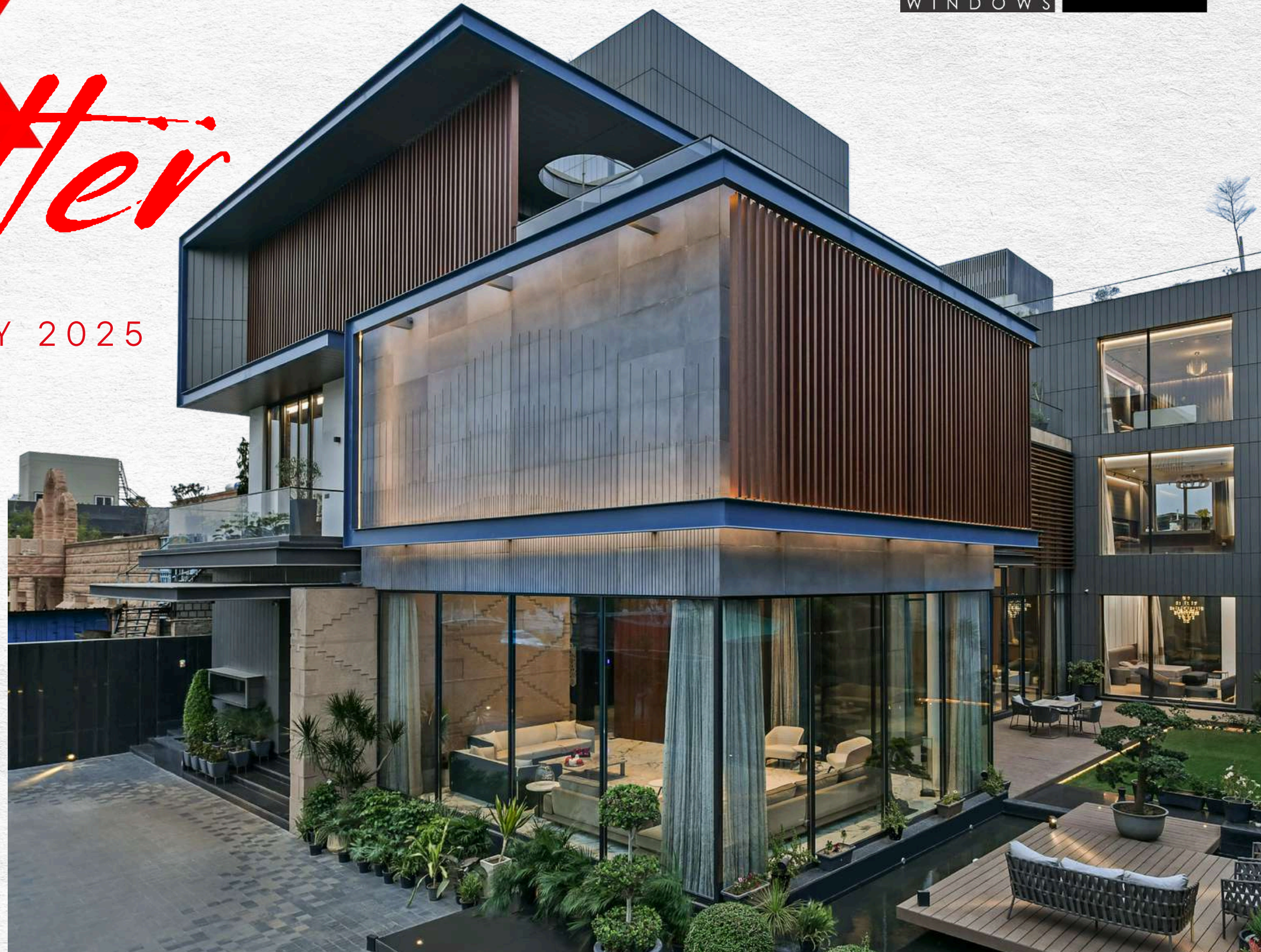
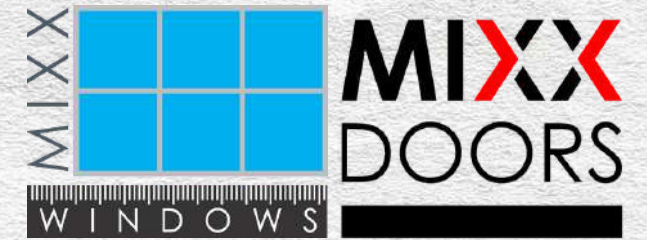


# MIXX *newsletter*

PROJECT HIGHLIGHT | JULY 2025

**JODHPUR RESIDENCE**

FIRM: 42MM ARCHITECTURE





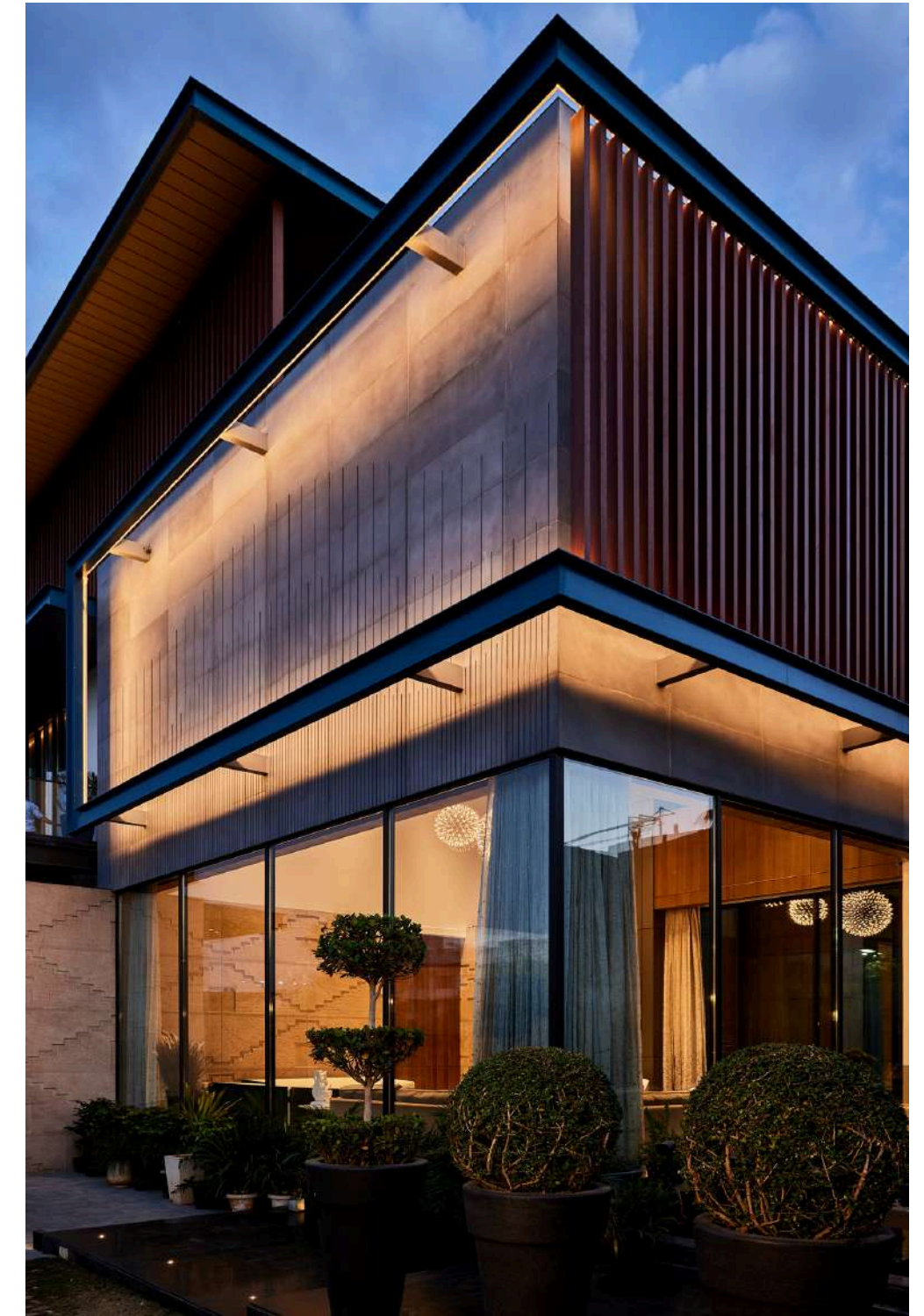
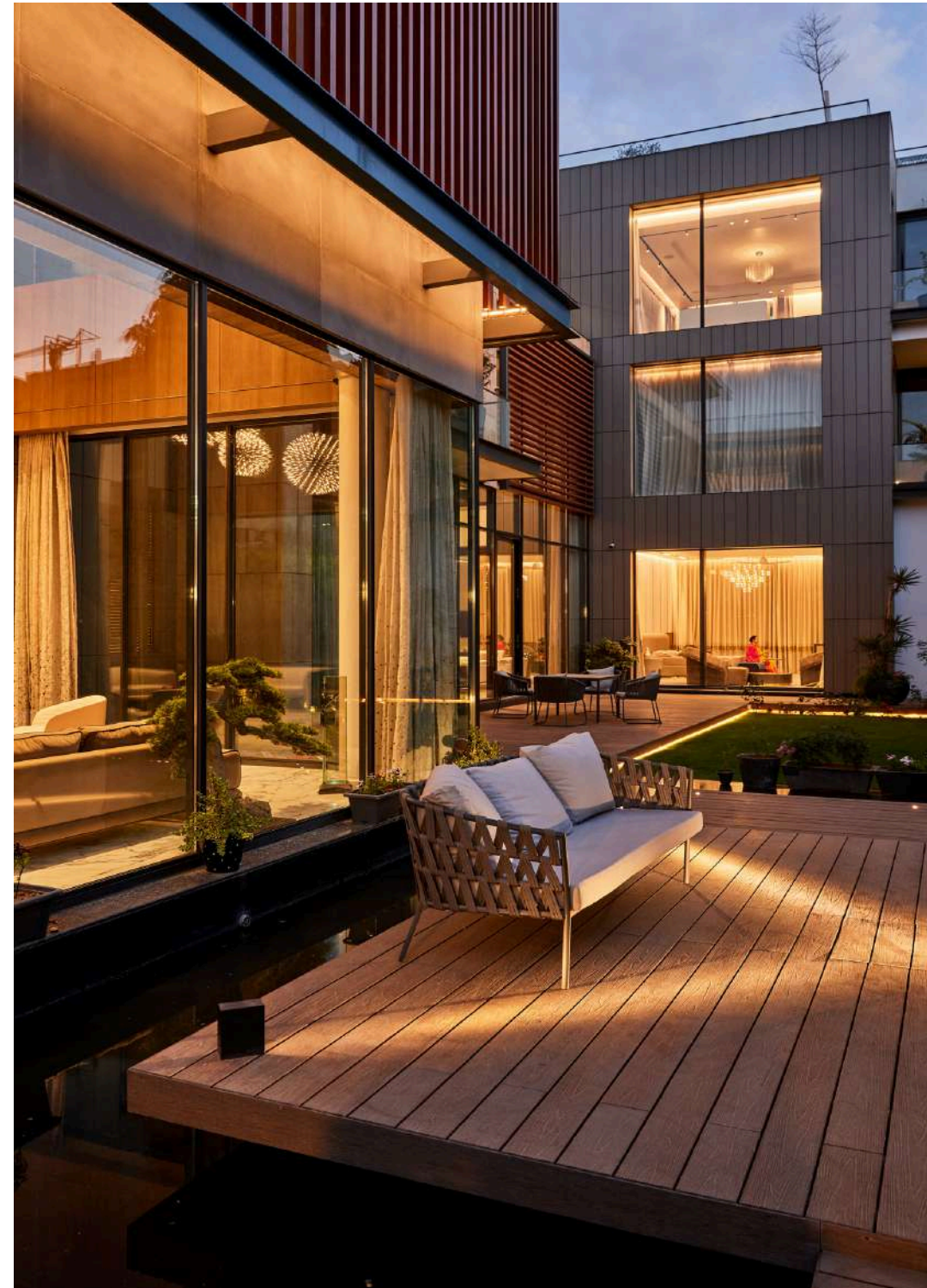




# Rationale of the Architecture

The architectural intent behind Jodhpur Residence was to create a contemporary home that responds thoughtfully to the harsh desert climate of Rajasthan while maintaining a deep connection to the surrounding cultural heritage. The structure is conceived as a series of clean, interlocking volumes that maximise natural light and ventilation without compromising privacy or comfort.

Large glazed surfaces were deliberately incorporated to dissolve boundaries between indoor and outdoor spaces, encouraging passive cooling and visual openness. Every fenestration detail was calibrated to bring in light while shielding from excess heat an essential balance in the regional climate.







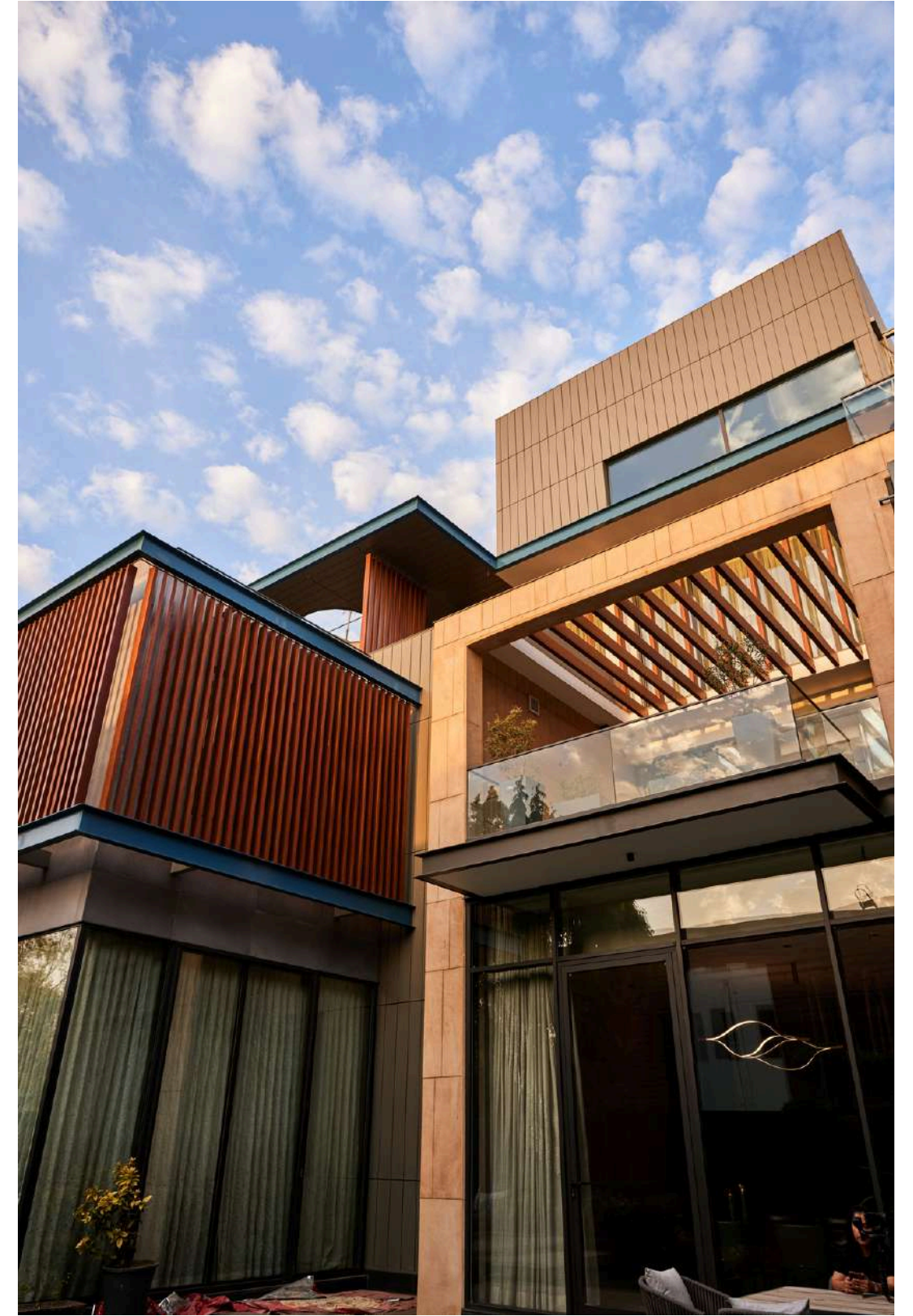




# Aesthetic and Material Expression

The design embraces a warm material palette of textured stone, wooden slats, glass, and blackened metal evoking a modern desert aesthetic that feels both grounded and refined. The subtle rhythm of vertical fins, recessed frames, and layered lighting enhances the sense of depth and dynamism. Key to the aesthetic success is the seamless integration of advanced window systems from Mixx Windows, including EXP 36 HR (RCN Portugal) and NC 65 STH & Poliedra Sky 50 (Metra Building, Italy). These minimal systems support the architecture's clean lines, framing the landscape with clarity while maintaining the visual softness of the built form.







# Integration of Metra Building Systems

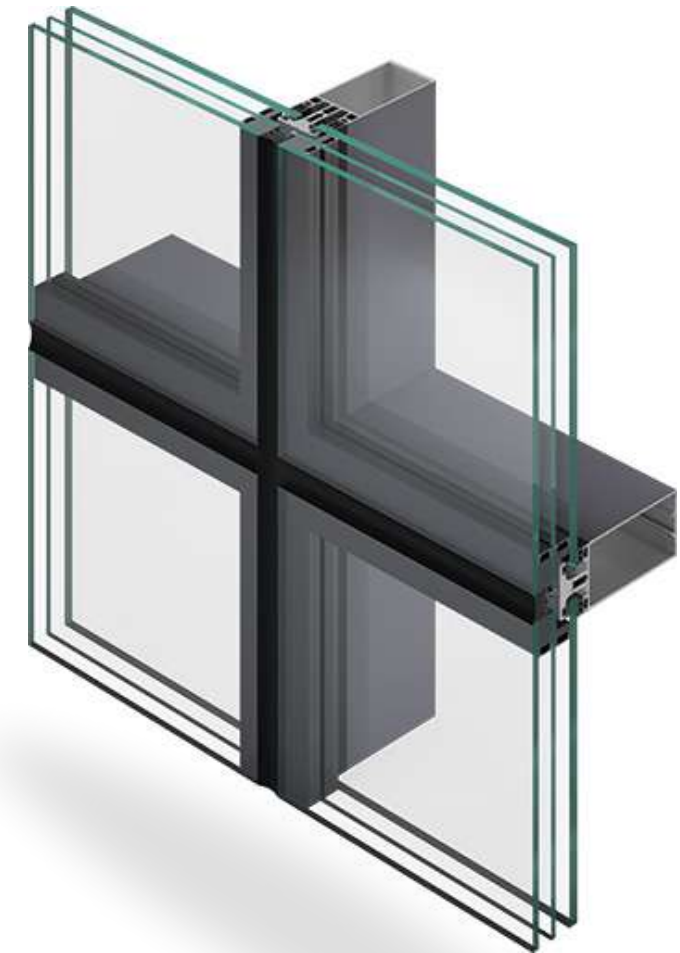
EXP 36 HR



NC 65 STH



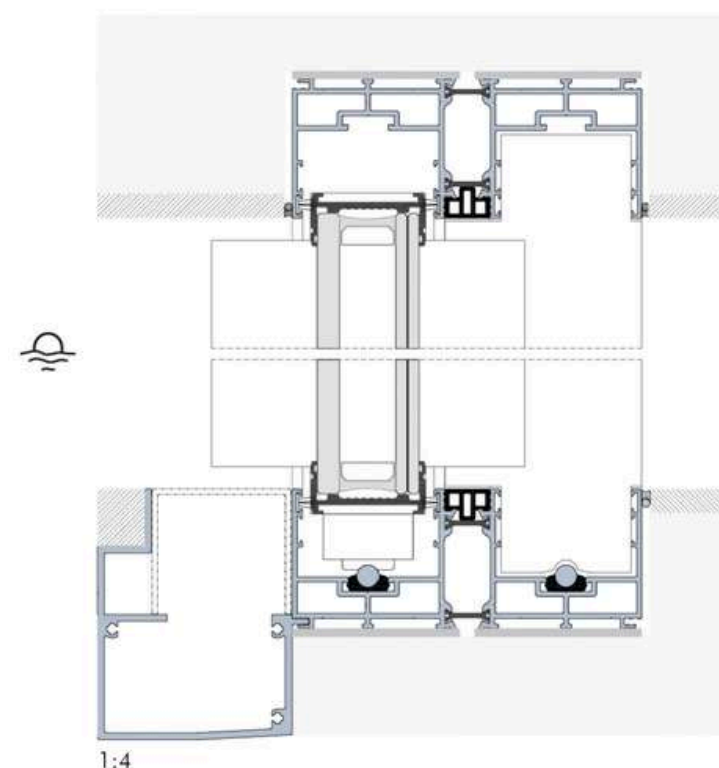
POLIEDRA SKY 50



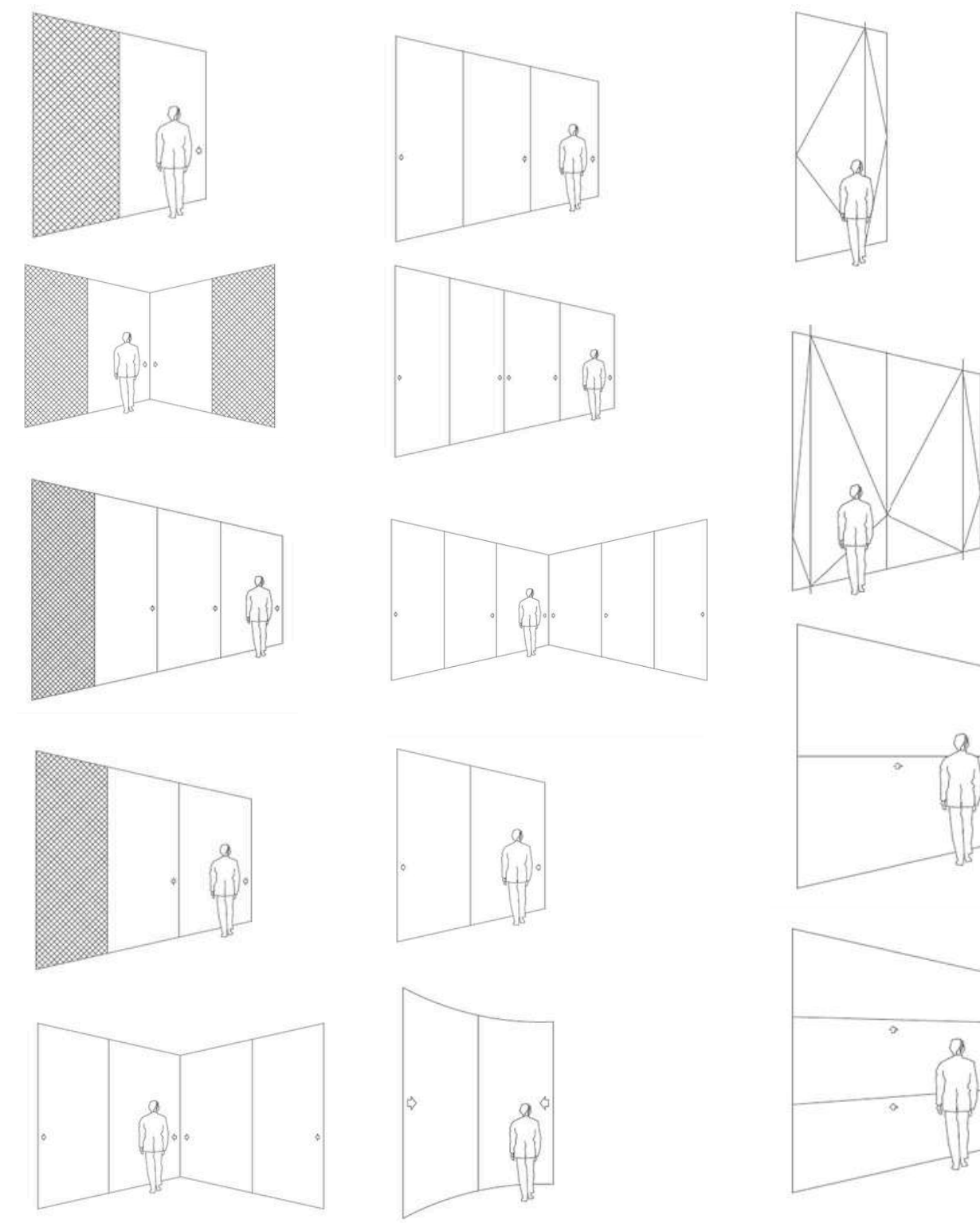
# Integration of Metra Building Systems



EXP 36 HR



- RCN EXP 36 HR: This minimalist sliding system features a recessed threshold hidden under the floor, enabling a seamless flat-floor transition between indoor and outdoor spaces. It supports large glazed areas with high performance and user comfort, accommodating glass thicknesses of 32mm or 36mm and weights up to 600kg. Customizable with up to four rails and options like motorization, it maximizes natural light and aesthetic appeal with ultra-slim aluminum profiles.



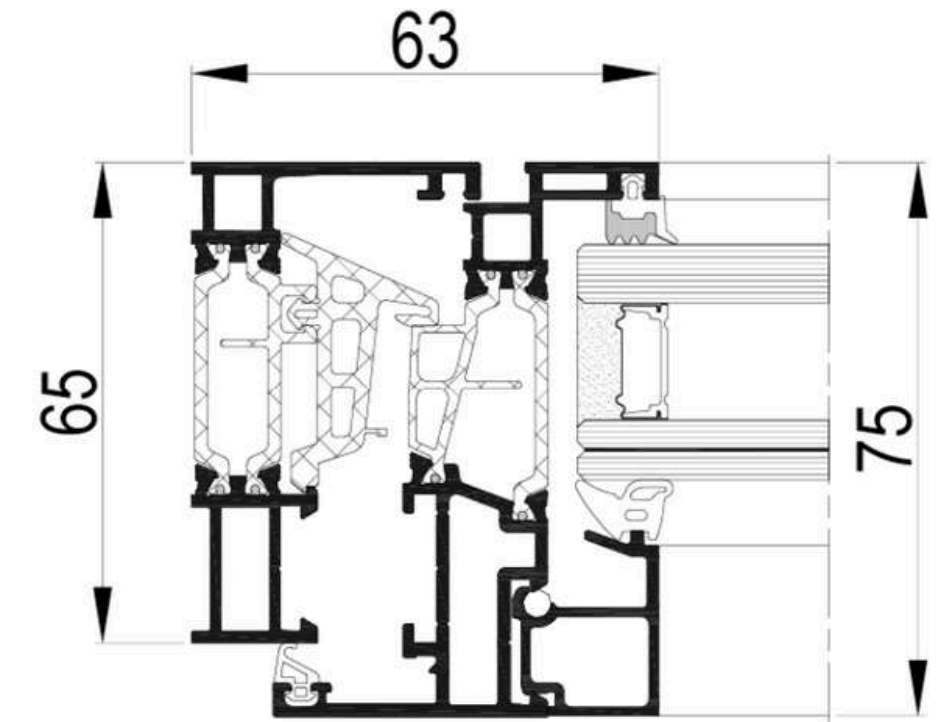


# Integration of Metra Building Systems



NC 65 STH

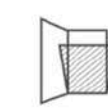
- METRA NC 65 HES: A high energy-saving casement window and door system, designed with eco-friendly materials to deliver excellent thermal and acoustic insulation. It achieves superior burglar resistance and is ideal for renovations due to its compact frame depth (65mm) and sash depth (75mm). The system supports glass thickness from 4mm to 58mm and offers a wide range of finishes and aesthetic lines, combining security, comfort, and elegant Italian design.



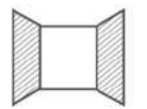
Fixed



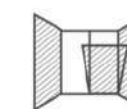
1 side hung casement



Tilt-and-turn



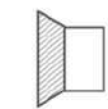
2 side hung casements



2 side hung casements  
with tilt-and-turn



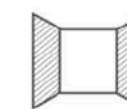
Bottom hung casement



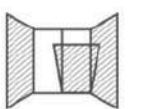
1 side hung casement



Tilt-and-turn



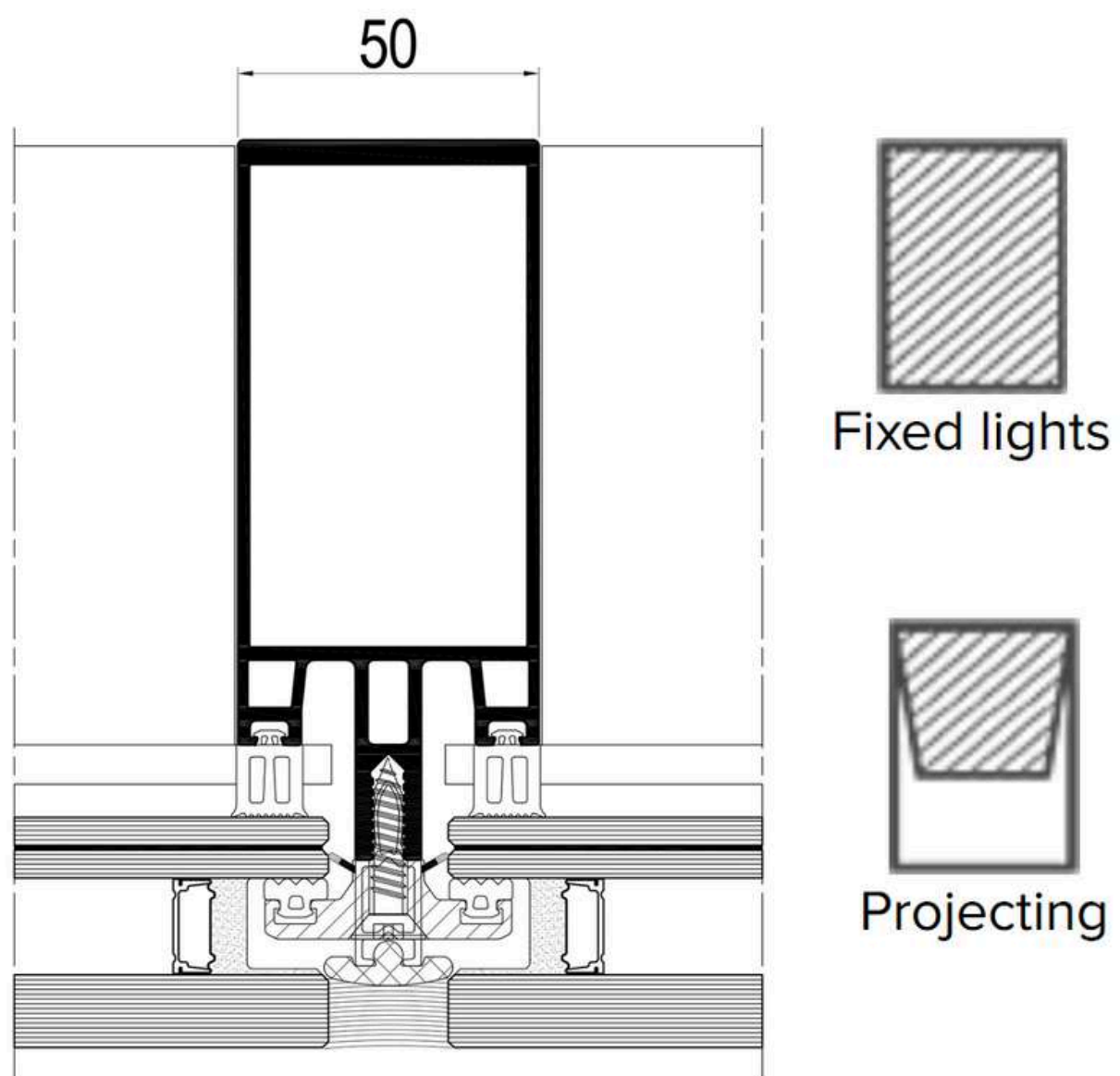
2 sashes



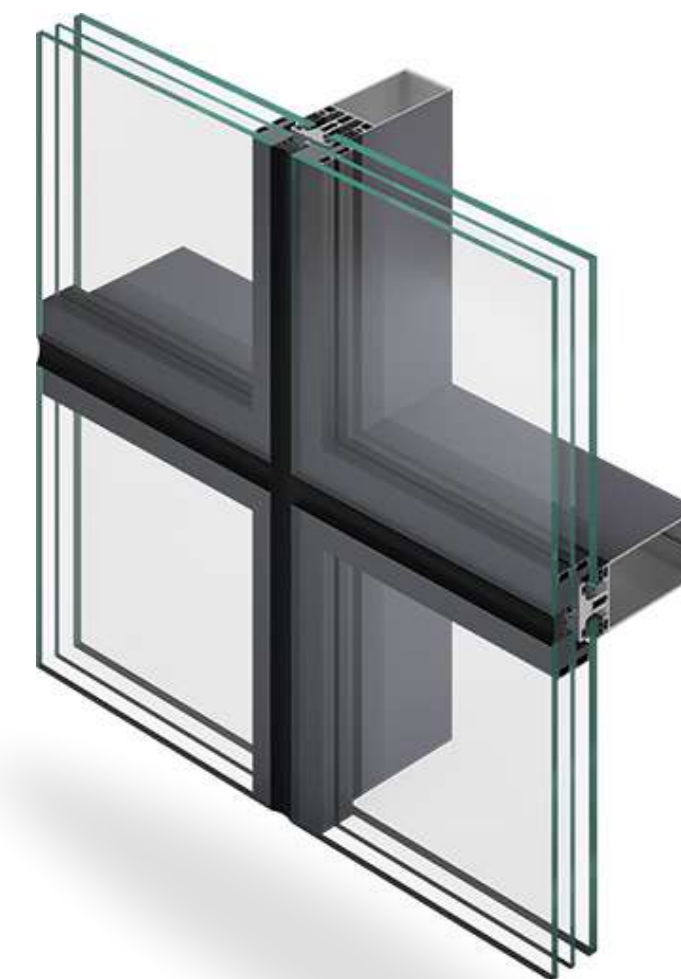
2 side hung casements  
with tilt-and-turn



# Integration of Metra Building Systems



- POLIEDRA SKY 50: This system emphasizes architectural integration with a fully glazed, transparent external look. It allows for large-size and heavy-weight glazed panels, ensuring minimal environmental impact while providing expansive views and modern aesthetics.



POLIEDRA SKY 50









# Context and Integration

Set in a residential neighbourhood of Jodhpur, the home negotiates between privacy and openness. The front façade is bold yet respectful, with a semi-permeable skin that buffers the urban edge while allowing filtered views. The residence anchors itself in the local landscape through a garden that wraps the ground level, softening the architecture and enhancing microclimate. Mixx Windows' large-format sliders and curtain wall systems allowed the architects to open the interior toward the greens without visible mechanical clutter fostering a fluid relationship between structure and site.









# Innovation and Originality

One of the most distinctive features of the residence is its strategic use of cutting-edge fenestration to meet both functional and formal ambitions. The Poliedra Sky 50 curtain wall enabled the creation of a soaring double-height living space, visually connected to the outside but acoustically and thermally protected. The slim EXP 36 HR sliding system enabled floor-to-ceiling openings that disappear into walls delivering maximum transparency with minimal frame intrusion. Mixx Windows Team worked closely with the architects to prototype details, test wind loads, and ensure site-specific adaptation an example of innovation through collaboration.



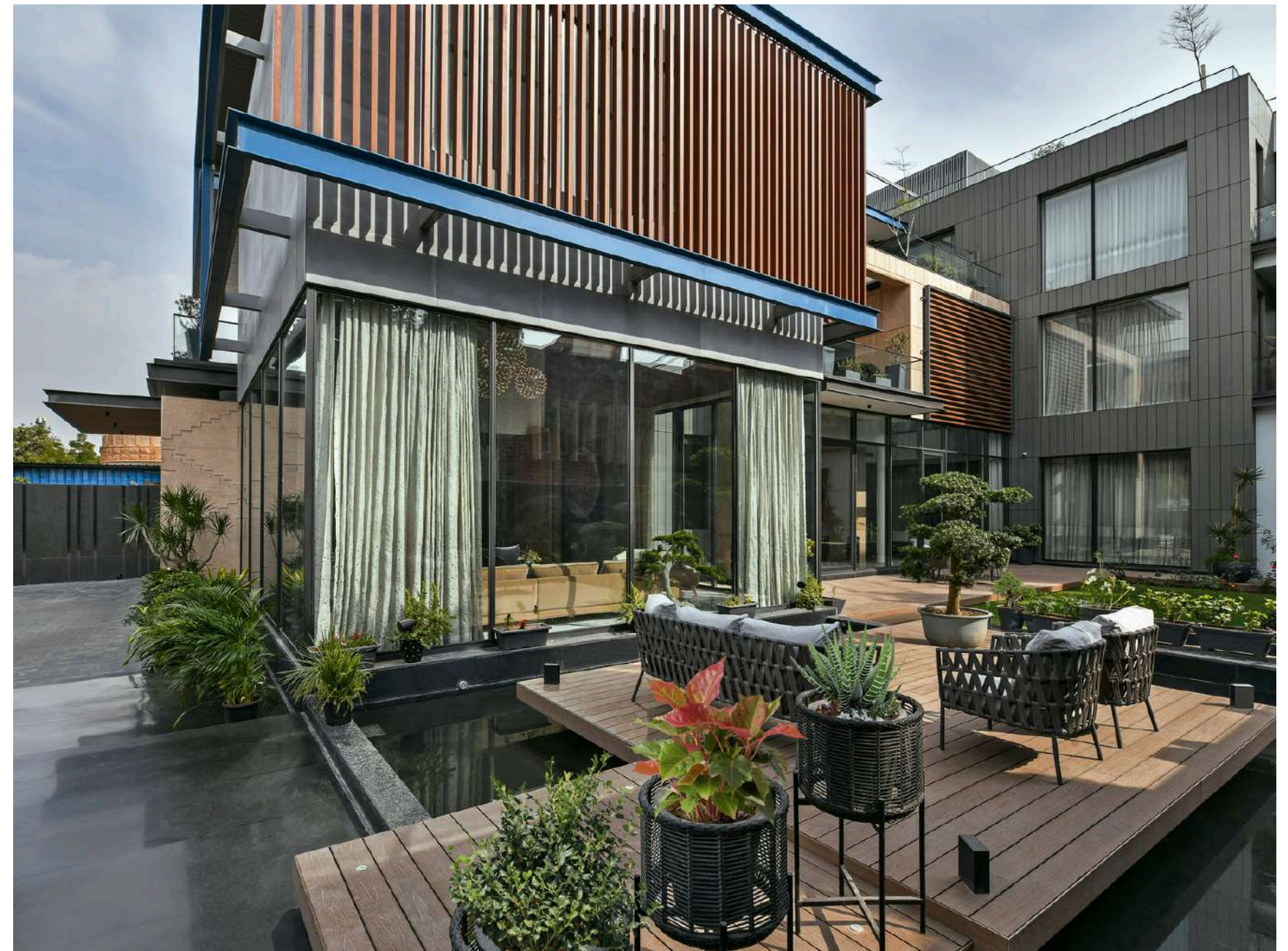






# Technical Excellence and Execution

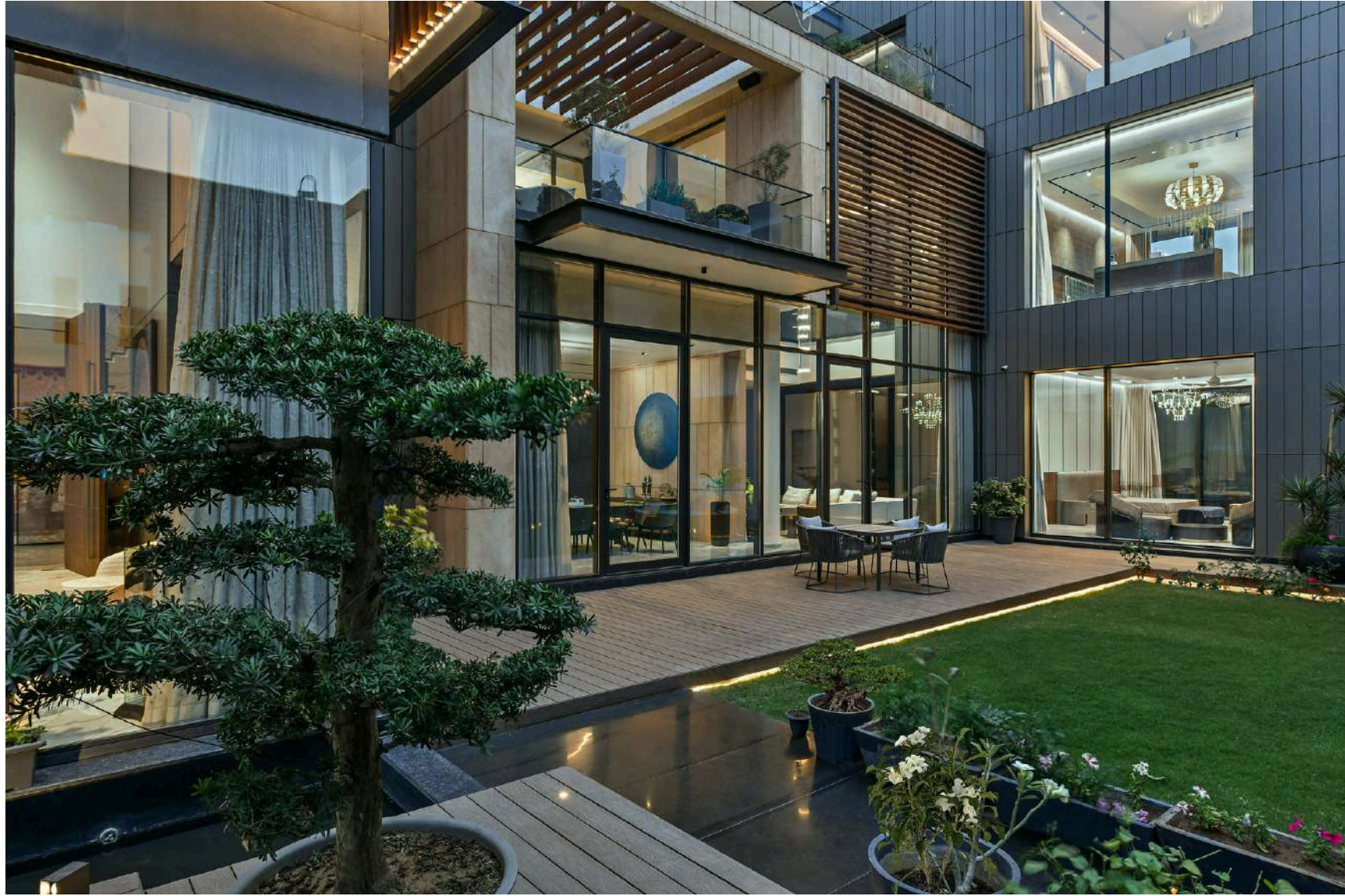
Mixx Windows' involvement extended far beyond mere delivery or execution. We were fortunate to be engaged in the project from design coordination through to precision installation, under the expert guidance of 42mm Architecture. Our specialised expertise in integrating imported European systems into Indian projects has consistently played a crucial role in realising the architectural vision of the principal architect. The positive feedback we continue to receive from both architects and clients further reinforces our commitment to excellence, driving the team to uphold even greater discipline in executing modern landmark structures such as the esteemed Jodhpur Residence.















## VISIT OUR SOCIAL MEDIA

Follow Mixx Windows on social media for the latest updates on our projects, innovations, and design inspirations. Explore our work, see behind-the-scenes moments, and stay engaged with the world of premium façades, windows, and doors.

Join our journey—follow us today!



@mixxwindows



@mixxwindows



@mixx-windows

[www.mixxwindows.com](http://www.mixxwindows.com)

