

# MIXX *newsletter*

PROJECT HIGHLIGHT | AUGUST 2025

**SHANTI NIKETAN RESIDENCE**

FIRM: MATRA ARCHITECTS





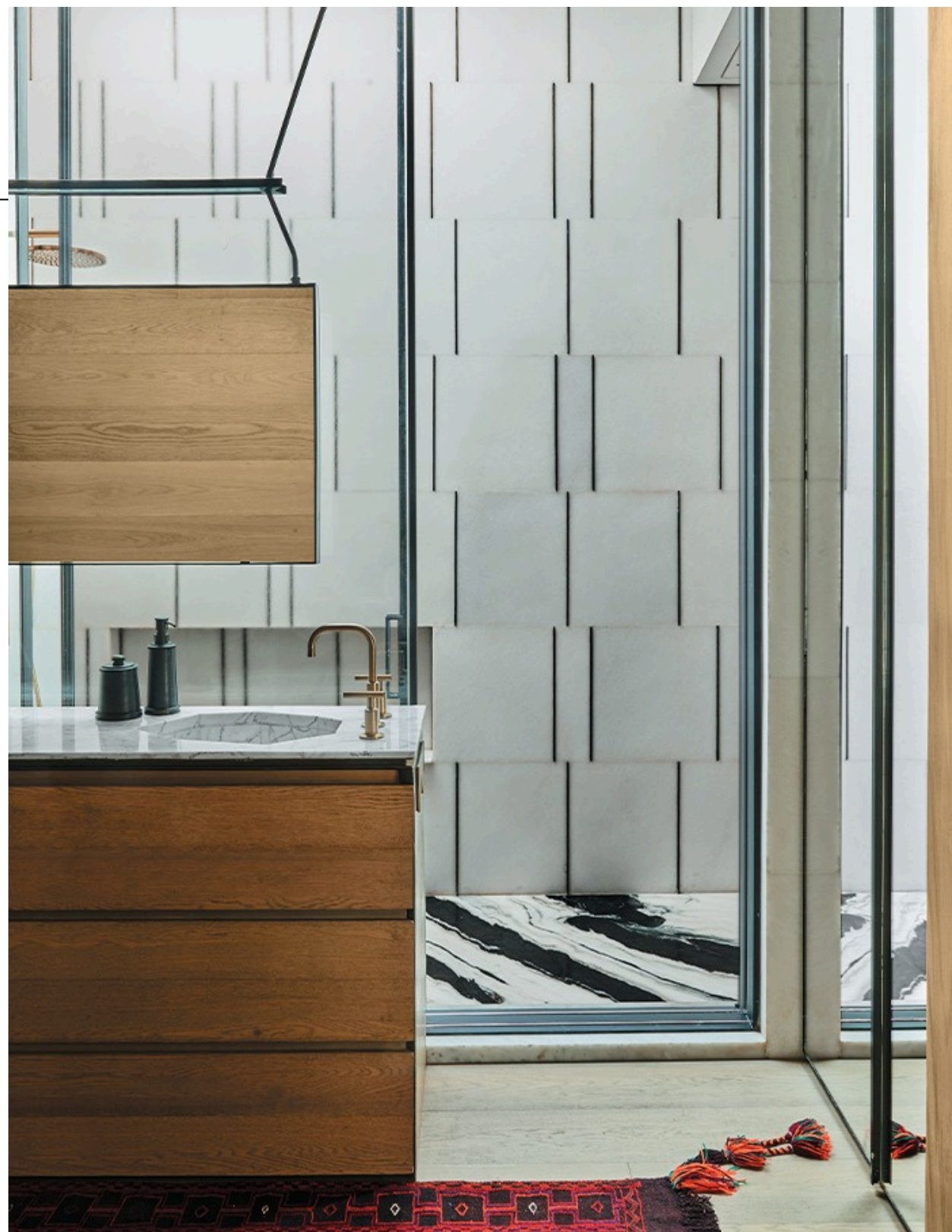


# Rationale of the Architecture

Spanning approximately 56,000 sq ft, the Shanti Niketan Residence, envisioned by Verendra Wakhloo of Matra Architects, evokes Ludwig Mies van der Rohe's ethos through its command of form and light. Concrete's monumental simplicity meets spatial poetry in a three-storied composition, double-height entrance, expansive ground-floor living, and vertically oriented upper levels. Strategically placed RCN EXP 24 C sliding windows and Metra NC 50i casements sculpt light infiltration and frame views, reinforcing the interplay of transparency and mass. The design respects scale while imbuing functional elegance, the interplay between structural clarity and crafted articulation defines the architectural rationale.



# Aesthetic and Material Expression



The aesthetic of Shanti Niketan is rooted in the tactile gravitas of exposed concrete juxtaposed with curated finest architectural craftsmanship. RCN EXP 24 C sliders and Metra NC 50i casements punctuate walls of concrete, enhancing material contrasts, modulating light, and anchoring visual rhythm across textured surfaces and elegant craftwork.



# Integration of Mixx Building Systems

EXP 24 C



NC 50 I

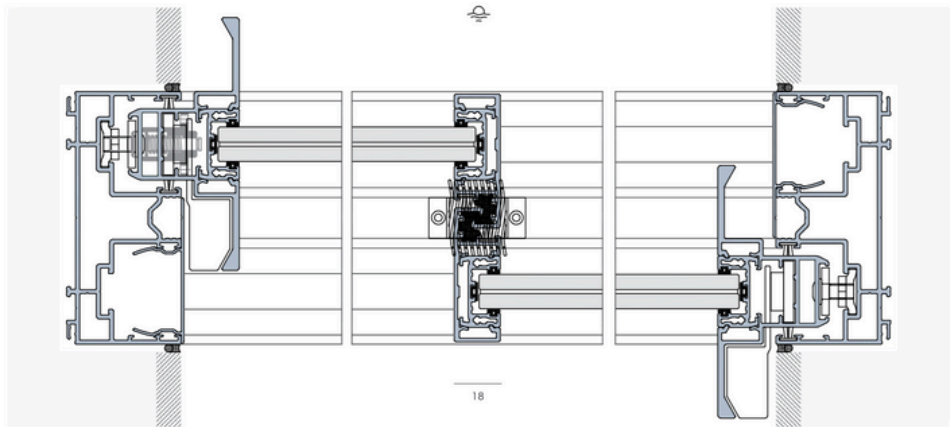


# Integration of MIXX Building Systems

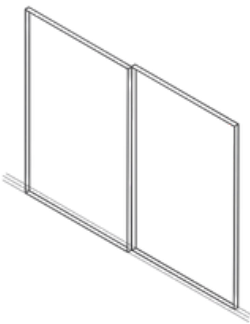
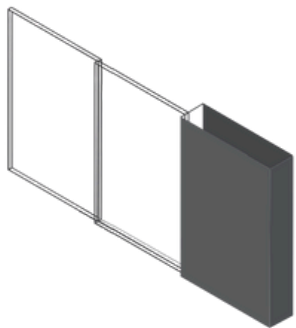
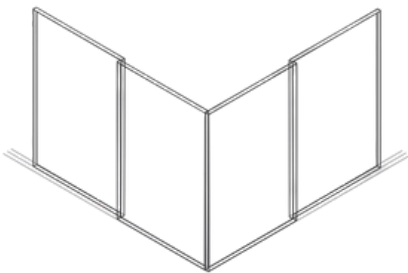


EXP 24 C

- RCN EXP 24 C transforms small spaces into havend of light thanks to its great versatility for outdoor applications. This system can be integrated as an option for interiors since it does come without thermal breakage. This system offers an even minimalistic elegance (the central profile is 18mm instead of 21mm), allowing natural light to flow unimpeded, uniting home owners with the outside world in perfect harmony.



## EXP 24 OPENING POSSIBILITIES



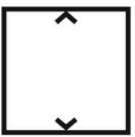
## EXP 24 GENERAL SPECIFICATIONS



Central Profile View  
18 mm



Glass Thickness  
≤ 24 mm



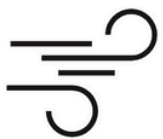
Maximum Height /  
Leaf  
3 m



Maximum Area / Leaf  
8 m<sup>2</sup>



Weight  
250 Kg



Micro-ventilation

Thermal Coefficient  
**1,5 W/m<sup>2</sup> K**

Water Tightness  
**Class 7A**

Air Permeability  
**Class 4**

Acoustic Insulation  
**≤ 34 dB**

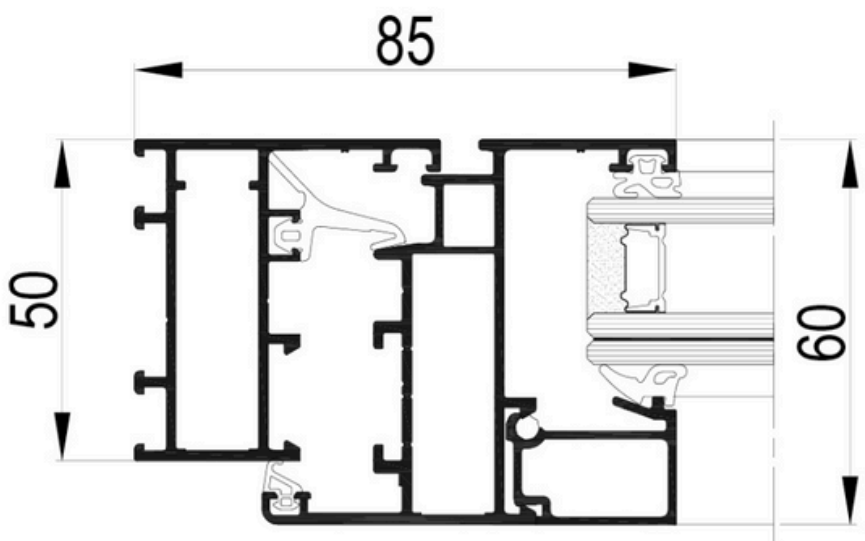
Wind Resistance  
**Class C5**



# Integration of MIXX Building Systems



NC 50 I



- NC 50 I is the perfect solution for those looking for an elegant and versatile aluminium frame that does not compromise on functionality. With a frame depth of only 50 mm, it is the ideal choice for rooms where high thermal performance is not required, while maintaining the aesthetic, functional and durability prerogatives of aluminium frames. The various types of internal opening allow the NC 50 I to be adapted to any space and design requirement.

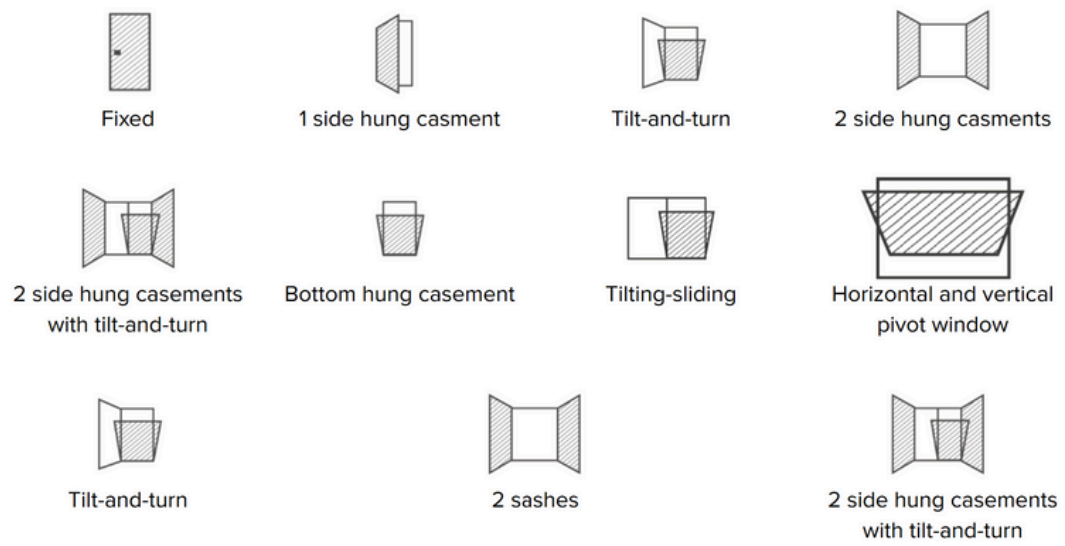
### Characteristics

Frame	50 mm
Sash	60 mm
Glass thickness	from 4 mm to 42 mm

### Performances

Water tightness EN 1027, EN 12208	E1050
Air permeability EN 1026 - EN 12207	Class 4
Resistance to wind load EN 12211 - EN 12210	C5

### Opening typologies







# Context and Integration



Nestled in New Delhi's upscale bylanes of Shanti Niketan, this home dialogues deftly with its enclave through understated monumentality and modernist restraint. The architecture mediates between solidity and openness, grounded in its context yet daring in expression. RCN EXP 24 C sliding windows and Metra NC 50i casements facilitate seamless transitions between interior and exterior, offering framed vistas of the garden and street. They bridge the heavy concrete envelope, balancing privacy, light, and interaction with outdoors. The result is a residence that feels anchored in its neighbourhood while simultaneously asserting a contemporary architectural identity.





# Innovation and Originality

The Shanti Niketan Residence is a bold re-interpretation of Bauhaus principles through a distinctly Indian lens. Its innovative fusion of minimalist concrete volumes and rich craftsmanship delivers originality and cultural resonance. Spatial choreography from double-height entrance to soaring upper volumes instils monumentality, while RCN EXP 24 C sliding and Metra NC 50i casement systems introduce refined technical nuance, light modulation, and functional clarity. The marriage of local materials and modernist geometry, underpinned by thoughtful craft revival, yields a home that's conceptually fresh, contextually grounded, and aesthetically forward-thinking.



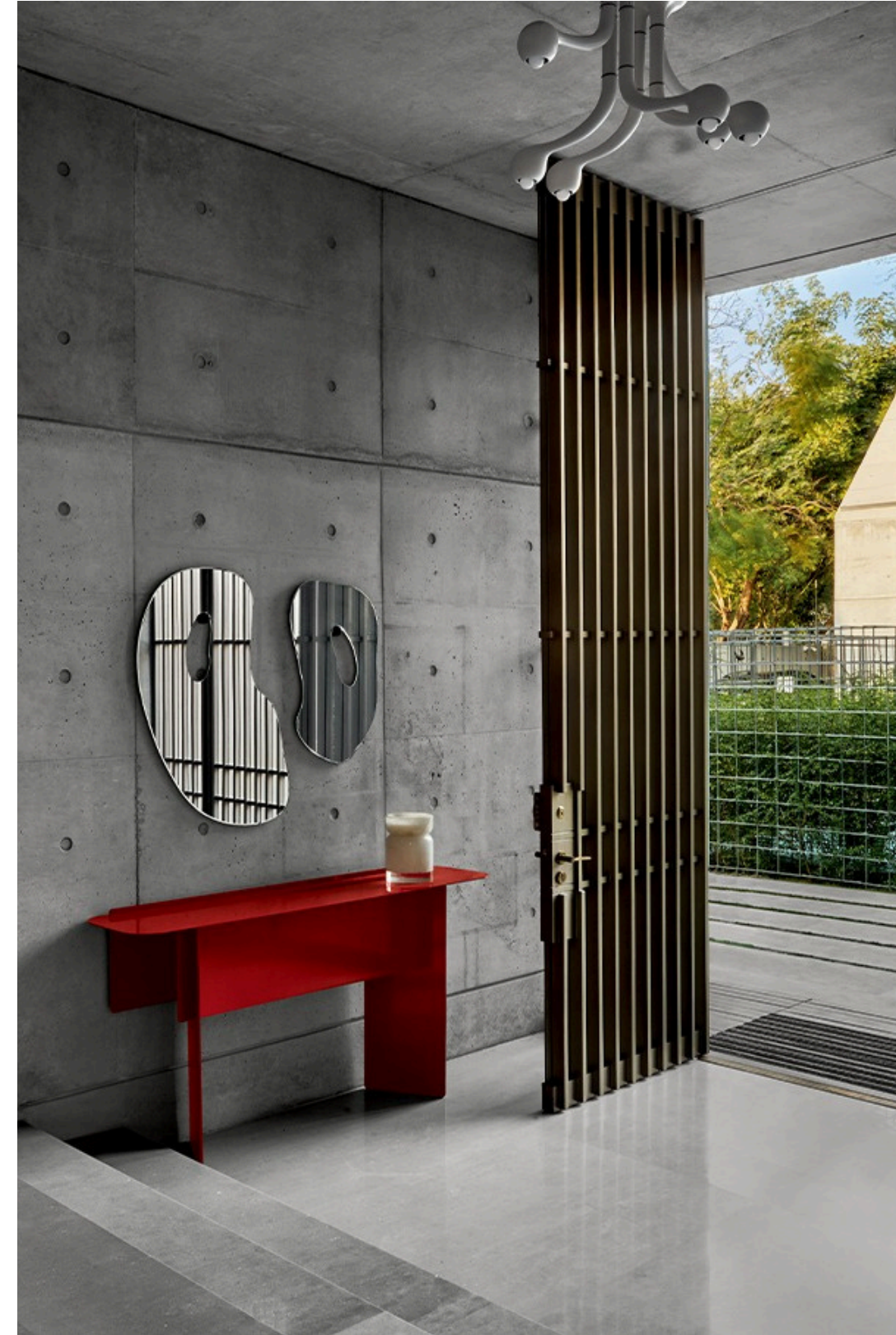


# Technical Excellence and Execution



Shanti Niketan epitomises precision in execution its imposing cast concrete structure is realised with impeccable formwork, texture continuity, and spatial intent. The installation of high-performance RCN EXP 24 C sliding windows and Metra NC 50i casements by Mixx underscores meticulous attention to thermal performance, smooth operation, and fine detailing. These systems integrate seamlessly into the concrete façade, reinforcing structural clarity without compromise. The house's scale demanded technical rigor in load-bearing spans, daylighting strategies, and material interfaces each resolved through disciplined craftsmanship, tight detailing, and a coherent modernist vocabulary.







# MIXX *newsletter*

## VISIT OUR SOCIAL MEDIA

Follow Mixx Windows on social media for the latest updates on our projects, innovations, and design inspirations. Explore our work, see behind-the-scenes moments, and stay engaged with the world of premium façades, windows, and doors.

Join our journey—follow us today!



@mixxwindows



@mixxwindows



@mixx-windows

[www.mixxwindows.com](http://www.mixxwindows.com)

