



BALI RESIDENCE

FIRM: ENAR CONSULTANTS

PROJECT HIGHLIGHT | APRIL 2025





www.mixxwindows.com

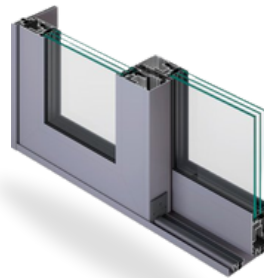
Bali House, Vasant Kunj, New Delhi

The Bali House Vasant Kunj Farmhouse is a remarkable example of how modern architecture can seamlessly integrate advanced facade systems to achieve both aesthetic excellence and functional efficiency. The facade design, developed using key Metra Building Systems—NCS 150 HES, NC 65 STH, and POLIEDRA SKY 50—creates a visually striking and sustainable structure that blends harmoniously with its natural surroundings.

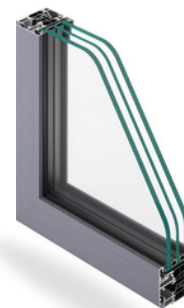
Integration of Metra Building Systems

The project exclusively incorporates Metra's advanced systems to achieve an innovative and efficient facade:

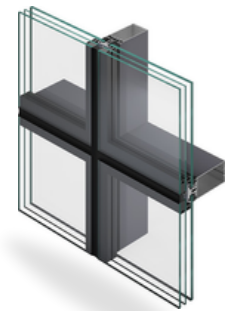
- **NCS 150 HES:** This system is used for large sliding doors that provide expansive views of the lush surroundings while ensuring smooth operation, thermal insulation, and weather resistance.
- **NC 65 STH:** Integrated into fixed windows and smaller openings, this system enhances energy efficiency through its advanced thermal break technology while maintaining a minimalist design.
- **POLIEDRA SKY 50:** Applied in the skylights and pergola structures, this system ensures structural stability while maximizing transparency. It creates luminous spaces that connect the interiors to the natural environment.



NCS 150 HES



NC 65 STH



POLIEDRA SKY 50



Contextual Harmony

The building's facade reflects its commitment to sustainability and contextual integration. By using systems like POLIEDRA SKY 50 for skylights and NCS 150 HES for sliding doors, the design allows uninterrupted views of the surrounding greenery while reducing energy consumption. These systems also contribute to preserving native trees and enhancing the overall landscape.



Innovation and Originality

The exclusive use of NCS 150 HES, NC 65 STH, and POLIEDRA SKY 50 highlights the project's originality in achieving a balance between cutting-edge technology and environmental sensitivity. The integration of these systems ensures optimal thermal performance, acoustic insulation, and aesthetic appeal, setting new benchmarks in modern farmhouse design.



To More To Its Glory...

The project has earned Platinum certification from the Indian Green Building Council due to its exceptional energy efficiency and material use. The facade plays a critical role in meeting these standards by leveraging Metra's high-performance systems to minimize energy consumption while maximizing comfort.









NEWSLETTER

VISIT OUR SOCIAL MEDIA

Follow Mixx Windows on social media for the latest updates on our projects, innovations, and design inspirations. Explore our work, see behind-the-scenes moments, and stay engaged with the world of premium façades, windows, and doors.

Join our journey—follow us today!



@mixxwindows



@mixxwindows



@mixx-windows

www.mixxwindows.com

